

Farmhouse



THE YATES



Colonial

Toll Brothers
America's Luxury Home Builder®



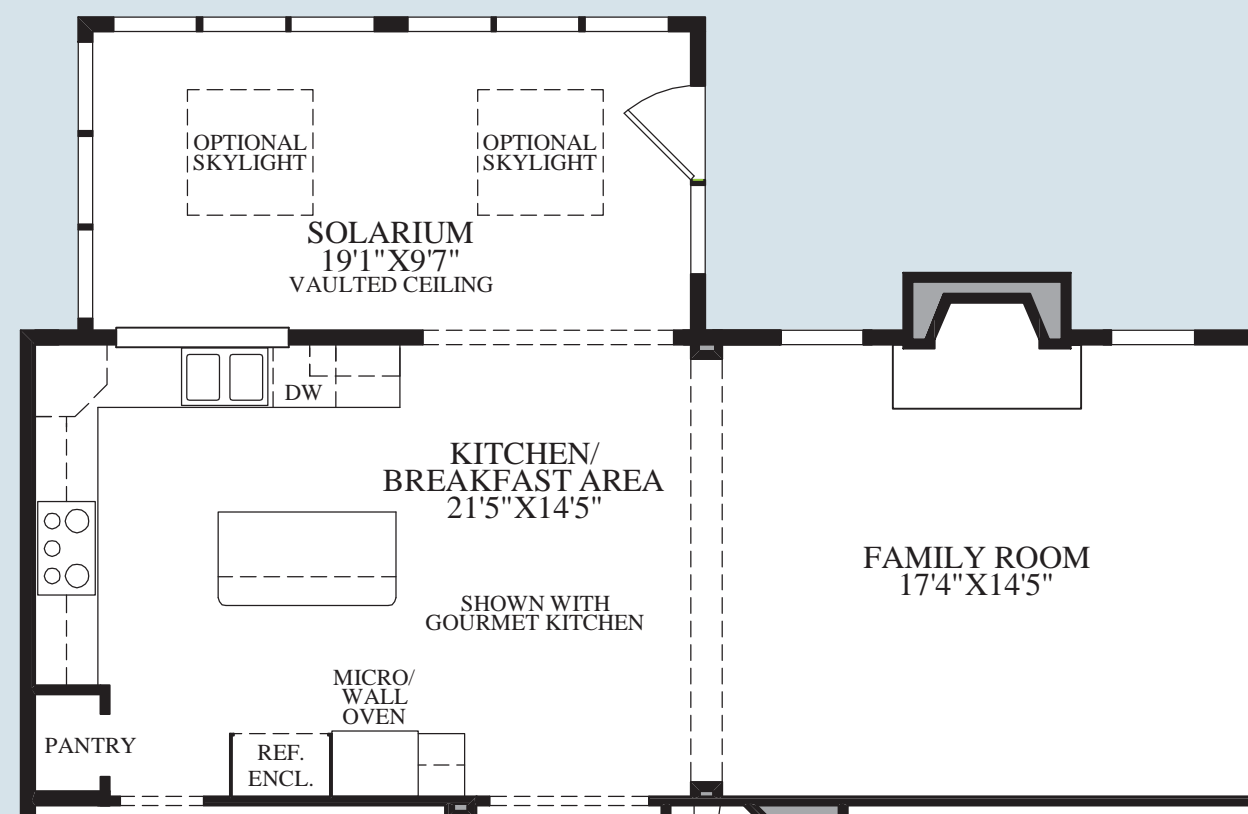
Federal



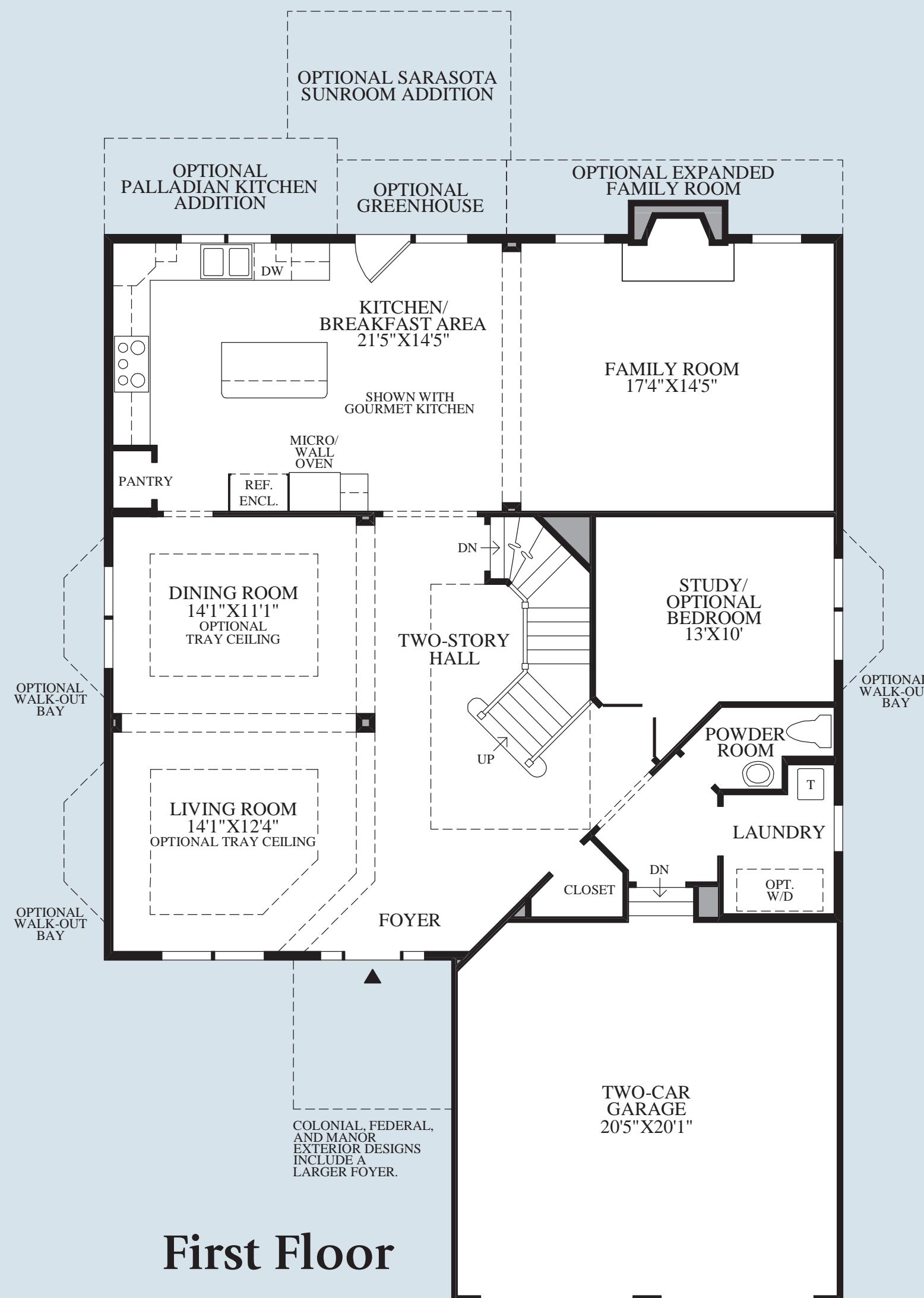
Manor

THE YATES HIGHLIGHTS

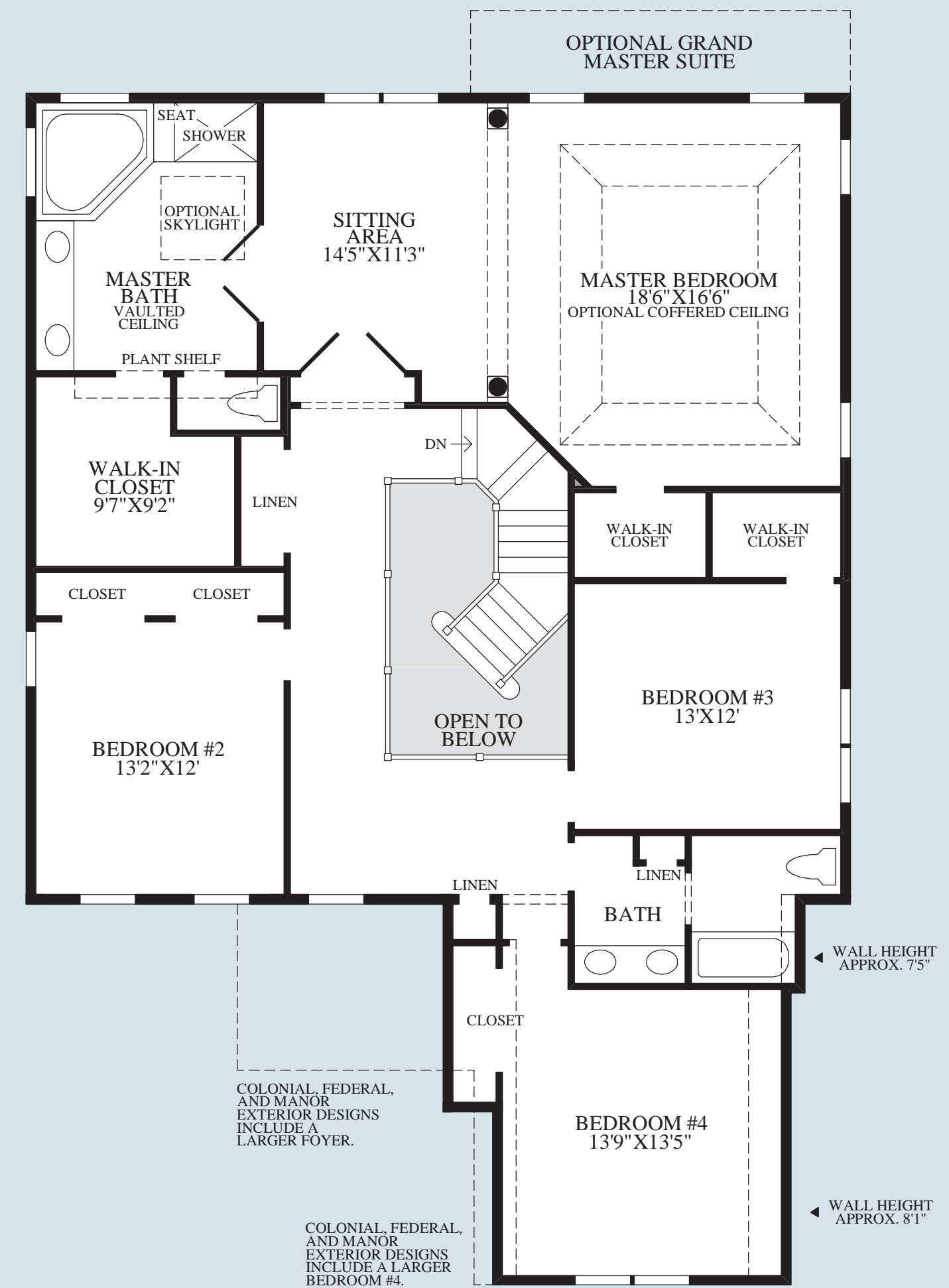
- The foyer opens to the formal living room and dining room and offers views of the elegant turned stair.
- The well-designed kitchen boasts a center island, a pantry closet, and an adjacent, sunlit breakfast area.
- The family room is enhanced by an included fireplace.
- The master bedroom suite offers a columned sitting room, dual walk-in closets, and a private bath that features a vaulted ceiling, a separate shower with a seat, a Roman tub, a dual-sink vanity, and a private toilet area.
- The second floor of this home also offers three additional bedrooms and a hall bath.
- This home also includes a private study and a separate laundry.
- Nine-foot ceilings throughout the first and second floors.



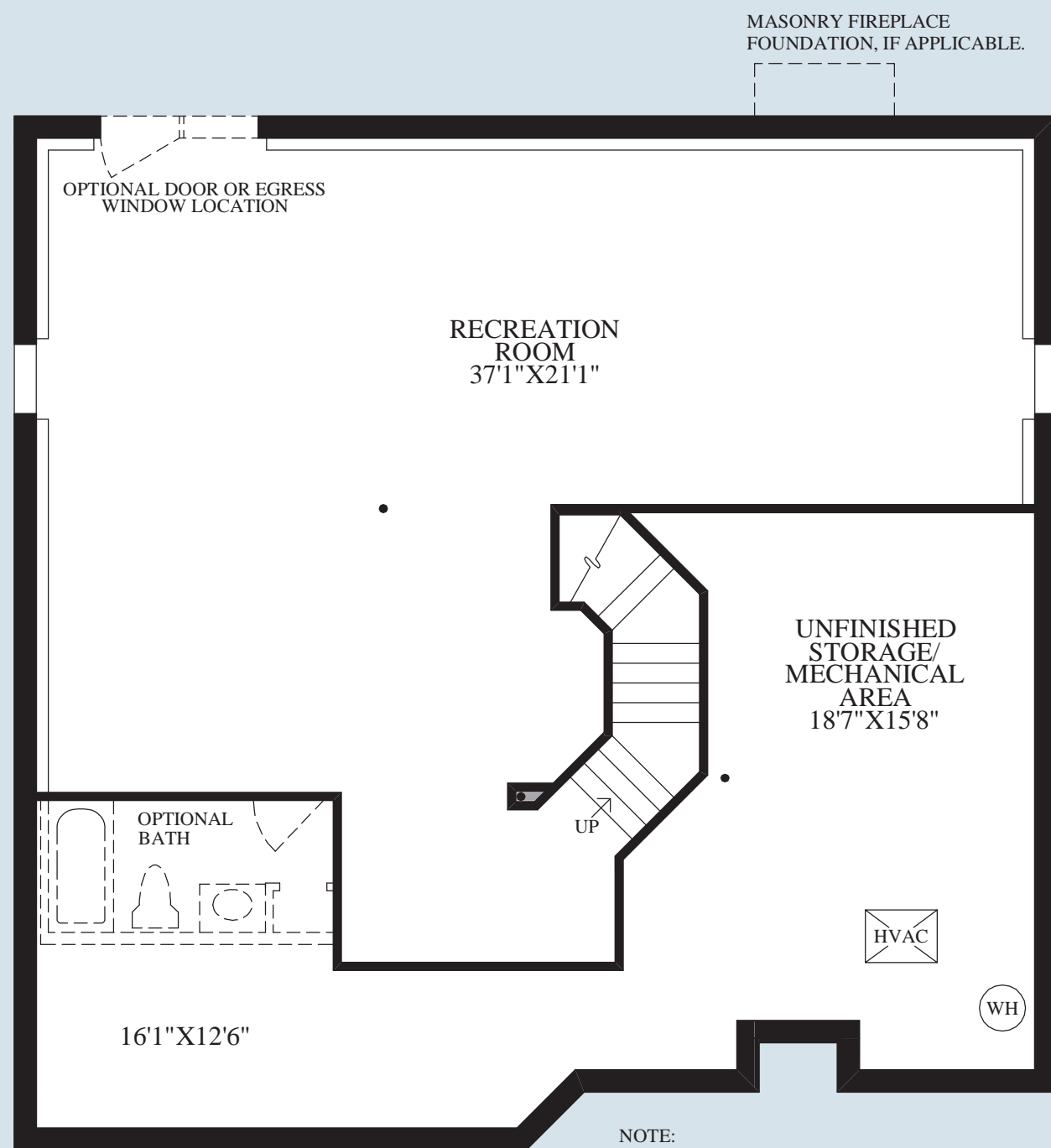
SHOWN WITH OPTIONAL SOLARIUM ADDITION



First Floor



Second Floor



SHOWN WITH OPTIONAL FINISHED RECREATION ROOM

NOTE: DESIGNS ARE SUBJECT TO FIELD VARIATIONS DUE TO EXACT HOME ELEVATION, OPTIONS PURCHASED, AND LOCATION OF MECHANICAL AND SUMP PUMP EQUIPMENT, WHICH MAY ALSO VARY AMONG INDIVIDUAL LOTS AND COMMUNITIES.

- DENOTES STRUCTURAL STEEL LALLY COLUMNS THAT CAN NEVER BE REMOVED. OPTIONS MAY ADD ADDITIONAL COLUMNS. PLEASE CONSULT SALES REPRESENTATIVE FOR SPECIFIC DETAILS.